

# JO PICKER

## (AC / DC Drive) Electric Stand-on Order Picker



- Pick up height up to 2nd and 3rd level of racking.
- Available with options of DC as well as AC drives.
- MOSFET programmable stepless speed controller.



The Josts electric stand-on order picker, JoPicker has been designed specially for the efficient order picking up to 2600 / 3600 mm from ground level. Two variants of JoPicker, one for picking from ground / first level (EPE 20), the other (EPE 08 / EPE 10) with a lift platform for picking up to either second level or third level of racking. The JoPicker enables a single operator to operate the vehicle for travel as well as order picking.

**Operator Area :** The operator area is positioned quite with respect to ground level for the operator to step-in and step-out easily. Ergonomically positioned back rest, easy-to-reach tiller handle and optimum leg-space in the operator area provides ample scope for comfortable operation. The checkered plate provide good grip to the operator and prevents slipping during acceleration, deceleration and turning. Emergency stop button provides maximum safety for the operator.

**Drive :** Powerful 1.5 Kw high performance DC / AC motor of 1 hour rating with high over load capacity efficiently drives a low noise, two stage compact gear unit mounted directly on to the drive wheel.

**Drive Control :** Microprocessor based MOSFET controller provide smooth and stepless control of speed and acceleration. It also helps in obtaining fault diagnostic information quickly and easily. The high life cycle contactors used in the controller circuit enhances dependability and productivity. The controller can also be programmed for dual mode setting for travel speed.

**Chassis :** Robust steel construction and the stable five point contact design permits high residual capacities and enhances stability during turning. The rounded enclosed contours permits safe maneuvering in confined spaces. The battery holding compartment in the chassis is provided with suitable roller bed.

**Lift Platform :** EPE 08 / EPE 10 comes with a lift platform of 800 / 1000 kg UDL capacity and lift height of 1000 / 1600 mm respectively. The lift platform is lifted by robust lift arms made from tubular sections for higher strength and carbon steel pins used for the pins are ground and plated for long trouble free operation. The lift platform is provided with protective side railing and a door to enable the operator to get into the lift platform without dismounting from the truck. The lift platform is also provided with a pendent switch for travel as well as hydraulic operation.

**Pay Load Platform :** EPE 20 comes with a fixed platform of 2000 kg capacity at 225 mm from ground level. It can be provided with optional side railing, protective side flap to contain the goods with in the platform. The operator can access the goods in the platform without dismounting from the truck.

**Wheels :** All wheels ( Drive wheel  $\varnothing 200 \times 85$  mm wide, rear wheels  $\varnothing 200 \times 85$  mm wide, support castors  $\varnothing 150 \times 50$  mm wide) are made of polyurethane material as standard. These enable noiseless smooth ride over variety of surfaces and cause less damage to expensive flooring.

**Tiller Head :** Multifunction tiller head with ergonomically arranged operating elements for travel, lift, lowering and horn at finger tips provide highest operator comfort and safety.

**Steering :** The tiller control handle configuration enables easy and effortless steering with steering lock at  $90^\circ$  on either side steering operation, are possible in limited range of handle inclinations comfortable to the operator. This provides additional operational safety.

**Brake :** Electromagnetic disc brake with hard wearing, asbestos free liner provides quick braking. When the handle is close to vertical or horizontal position, the brake becomes operational with simultaneous power cut-off.

**Hydraulics :** Compact power pack unit with high pressure pump driven by 2.2 Kw sturdy compound wound motor forms the heart of hydraulic system which enables smooth and efficient lifting and lowering operations to various heights. Lifting and lowering operations can actuated either by the push button on the tiller head or with pendant switch on the lift platform. The lift platform is operated by a single acting hydraulic cylinder with hard chrome plated piston rod, honed cylinder tube and high quality seals and guide rings which provide trouble free operation.

**Safety :** The truck is equipped with lowering brake valve in the hydraulic circuit for gradual lowering. The BDI unit enables automatic lift cut off at 80% battery discharge condition for enhanced safety. The hydraulic circuit also has safety features like hose burst valve, pressure relief valves and non return valves. The controller can also be set for dual travel speed limit (optional). The lift platform scissors are protected with bellows for additional safety. The truck (EPE 08 / EPE 10) will operate in travel with safe speed in forward or reverse direction with the platform in raised condition.

**Servicing :** The modular service friendly design with easily removable bellows and front cover provides easy access to all components for servicing thus saving valuable time during maintenance.

**Battery :** The equipment comes with 24V / 195Ah traction battery and 24V / 330Ah as optional, to ensure steady power supply with trouble free battery maintenance.

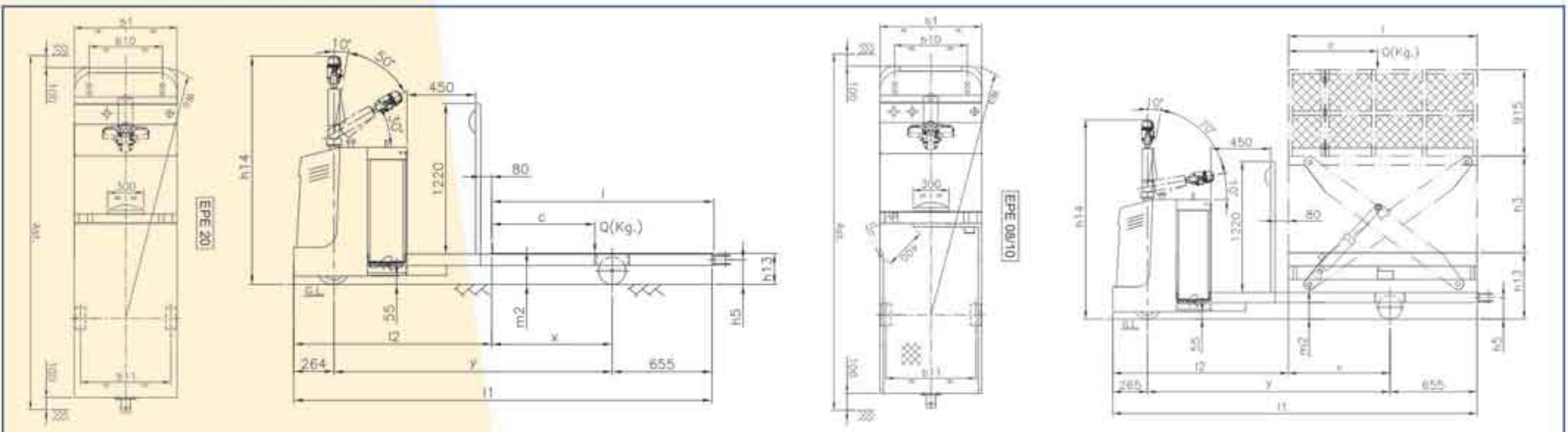
**Charger :** 24V / 28Amp (standard) or 24V / 42Amp (for optional 330 Ah battery) microprocessor controlled charger (standard) or timer controlled charger (optional) can be provided as per customer requirement.



## (AC / DC Drive) Electric Stand-on Order Picker

### Performance Data

Identification	1.1	Model		EPE 20	EPE 10	EPE 08
	1.2	Drive		DC / AC	DC / AC	DC / AC
	1.3	Operator type		Platform Truck	Order Picker	Order Picker
	1.4	Load capacity / rated load	Q (Kg)	2000	1000	800
	1.5	Load center distance	c (mm)	750	750	750
	1.6	Load distance, center of drive axle	x (mm)	850	850	850
	1.7	Wheelbase	y (mm)	1830	1830	1830
Weights	2.1	Service weight incl. Battery, apx.	Kg	1050	1400	1550
	2.2	Axle loading, laden front / rear	Kg	1100 / 1950	965 / 1435	930 / 1420
	2.3	Axle loading, unladen front / rear	Kg	800 / 250	815 / 585	830 / 720
Wheel, chassis	3.1	Tyres		Polyurethane	Polyurethane	Polyurethane
	3.2	Tyre size, front	mm	Ø200 x 85	Ø200 x 85	Ø200 x 85
	3.2	Tyre size, rear	mm	Ø200 x 85	Ø200 x 85	Ø200 x 85
	3.4	Support wheel (dimensions)	mm	Ø150 x 50	Ø150 x 50	Ø150 x 50
	3.5	Wheels, number front rear (x = driven wheel)		2+1/2	2+1/2	2+1/2
	3.6	Tread, front	b10 (mm)	606	606	606
	3.7	Tread, rear	b11 (mm)	750	750	750
Basic Dimensions	4.1	Lift	h3 (mm)	-	1000	1600
	4.2	Height of tiller in drive position min. / max.	h14 (mm)	1500	1500	1500
	4.3	Height, lowered	h13 (mm)	225	525	750
	4.4	Overall length	l1 (mm)	2750	2750	2750
	4.5	length to face	l2 (mm)	1250	1250	1250
	4.6	Overall width	b1 (mm)	850	850	850
	4.7	Platform dimensions	b1 x l (mm)	850x1500	800x1500	800x1500
	4.8	Towing height	h5 (mm)	180	180	180
	4.9	Ground clearance, center of wheelbase	m2 (mm)	145	145	145
	4.10	Aisle width for pallets	Ast. (mm)	3100	3100	3100
	4.11	Turning radius	Wa (mm)	2160	2160	2160
Performance Data	5.1	Travel speed, laden / unladen	Km/h	4.5 / 5.0	4.5 / 5.0	4.5 / 5.0
	5.2	Lift speed, laden / unladen	m/s	-	0.09 / 0.13	0.09 / 0.13
	5.3	Lowering speed, laden / unladen	m/s	-	0.13 / 0.09	0.13 / 0.09
	5.4	Max. gradability, laden / unladen	%	8 / 16	8 / 16	8 / 16
	5.5	Service brake		Electromagnetic	Electromagnetic	Electromagnetic
Electric Engine	6.1	Drive motor rating S2: 60min.	kW	1.5	1.5	1.5
	6.2	Lift motor rating S315%	kW	-	2.2	2.2
	6.3	Battery voltage, nominal capacity K5	V / Ah	24 / 195	24 / 195	24 / 195
	6.4	Battery weight	kg	350	350	350
	6.5	Energy consumption	KWh / h	0.74	0.74	0.74
Others	8.1	Type of device control		Mosfet	Mosfet	Mosfet
	8.2	Sound level at the drivers ear	db (A)	85	85	85



• For any special requirements, Please contact Jost's marketing department. • Dimensions indicated here are subject to variations of  $\pm 20\text{mm}$  and performance within  $\pm 10\%$ . • Right to make changes and technical improvements reserved.